

CENTURY FALCON FR SERIES HOLE OPENER

Century's Falcon FR Series Hole Openers are Engineered specifically for contractors that need flexibility. Featuring a Mechanical Bolted Design, the Falcon FR offers Field Replaceable Assemblies to easily switch from one cutting profile to another on the jobsite. Designed for the 50 – 200,000 lb. class rig, the Falcon FR is available in 18" – 30" with 12.5" and 17" Arm & Cone Assemblies. Engineered to withstand the high rotational torque and pull forces required to fracture rock, the Falcon FR can go from Pilot Hole to 24" in a single pass.

Design Features

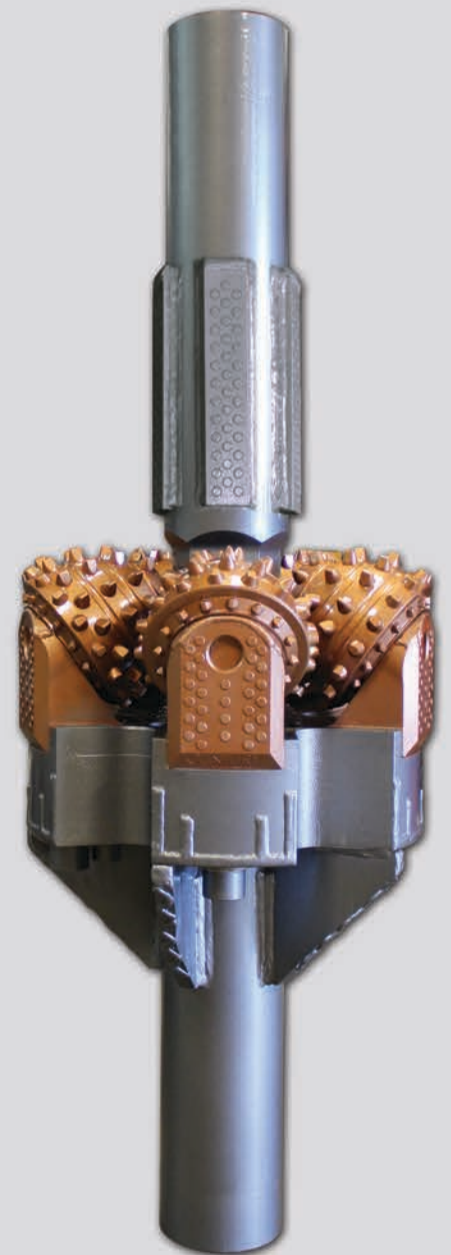
- Mechanical Bolted Arm & Cone Assembly
- Dual Pocket Joint Design
- Precision Machined Solid Body
- Available In 3 ½, 4 ½ I.F. & 5 ½ FHDS
- Interchangeable Jet Nozzles

Standard Options

- Active Gage Protection
- Shirrtail Protection
- Advanced Hydraulics
- Balanced Rotation with Multiple Point Stabilization

Engineered Design Advantages

- Robust Self-Energized/Self-Aligning Dual Pocket Joint
- Mechanical Bolted Design Increases Efficiency/Self Sufficiency
- Field Replaceable Cutters Reduces Downtime
- Machined Solid Body Welded to Shaft for Superior Strength
- Rear Jets Aid Cutting Removal & Tripping out of Hole

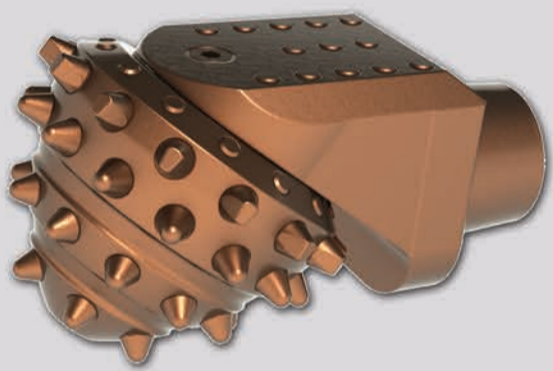


Patent Pending

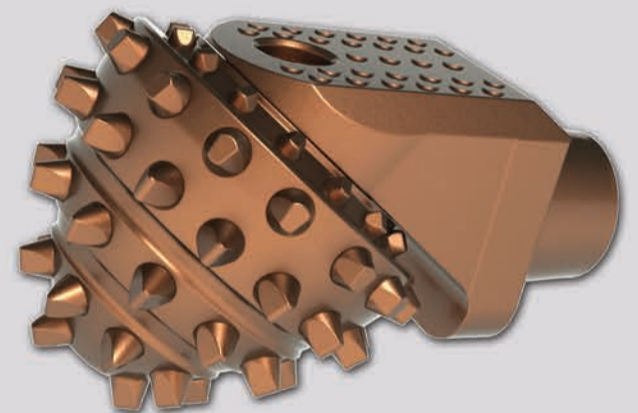
Made & Machined in the USA

CENTURY FALCON FR SERIES HOLE OPENER RECOMMENDED RUNNING SPECIFICATIONS

Hole Opener Inches / mm	Cone Size Inches / mm	Cones per HO	Suggested Drill Pipe RPM Range		Max Weight-On-Tool (Lbs.)	Cutter RPM Range
			Hard Formation	Soft Formation		
18 / 457	12.5 / 317	5	20	40	35,000	40 - 100
20 / 508	12.5 / 317	5	20	40	35,000	40 - 100
22 / 559	17 / 432	4	20	40	60,000	40 - 100
24 / 610	17 / 432	5	20	40	75,000	40 - 100
26 / 660	17 / 432	5	20	40	75,000	40 - 100
28 / 711	17 / 432	5	20	40	75,000	40 - 100
30 / 762	17 / 432	5	20	40	75,000	40 - 100



12.5" Arm & Cone Assembly



17" Arm & Cone Assembly

Disclaimer: Customer cannot assert any claim, regardless of cause, against CENTURY PRODUCTS, INC. for loss of anticipatory profits or for consequential damages. The above RPM Range is strictly for guidance – formations will dictate RPM speed and weight to fracture the rock.

Patent Pending